

MC-series

物性/規格 Physical	MC-70M	MC-120M	MC-220M
材質/Material	雲母/Mica	雲母/Mica	雲母/Mica
形状/Shape	粒状/Powder	粒状/Powder	粒状/Powder
Particle size(ave.)	0.425mm	0.710mm	1.18mm

MC (メタルチップ) 用途/Usage

- ・BMC/SCM/注型/吹付/インジェクション成型/プラスチック練り込み全般
- ・BMC/SCM/Casting/Spraying/Molding for injection/Kneaded plastic
- ・各種塗料全般
- ・Painting general
- ・その他各種模様材
- ・Other decorating usage

MC (メタルチップ) 特徴/Features

- ・ 気品ある光沢を演出しますので、高級感を表現出来ます。
- ・ 天然素材を使用しているため、化学的に安定しています。幅広い条件で御使用頂けます。
- ・ Elegant coloring in this series contributes to more luxurious feel.
- ・ Good chemical stability this series's obtaining because it's made from natural material. And you can apply it to wide range usages.

MC (メタルチップ) 色調/Color Tone

- ・ M silver/M black/M light grey/M grey/M veige/M light brown/M brown/M dark brown/M brick/M green/M orange/M light blue/M blue

Size:

Image 70M Silver



Image 120M Silver

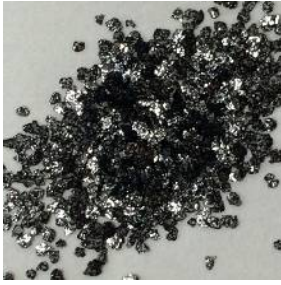


Image 220M Silver



MC-120M color samples

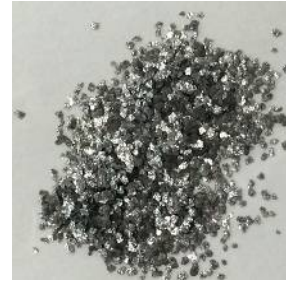
Black



Light Grey



Grey



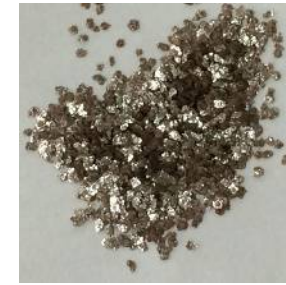
Veige



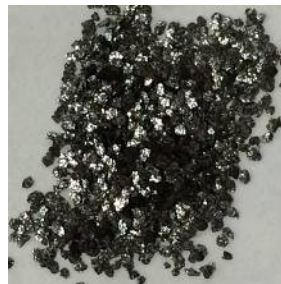
Light Brown



Brown



Dark Brown



Brick



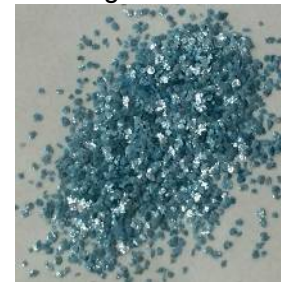
Green



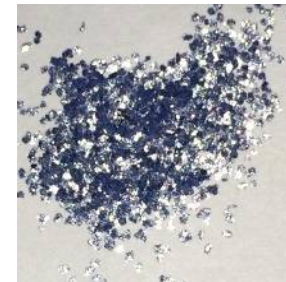
Orange



Light Blue



Blue



※御要望に応じて上記以外のカラーも作成出来ます。
Let us know freely if you have any requests of other colors